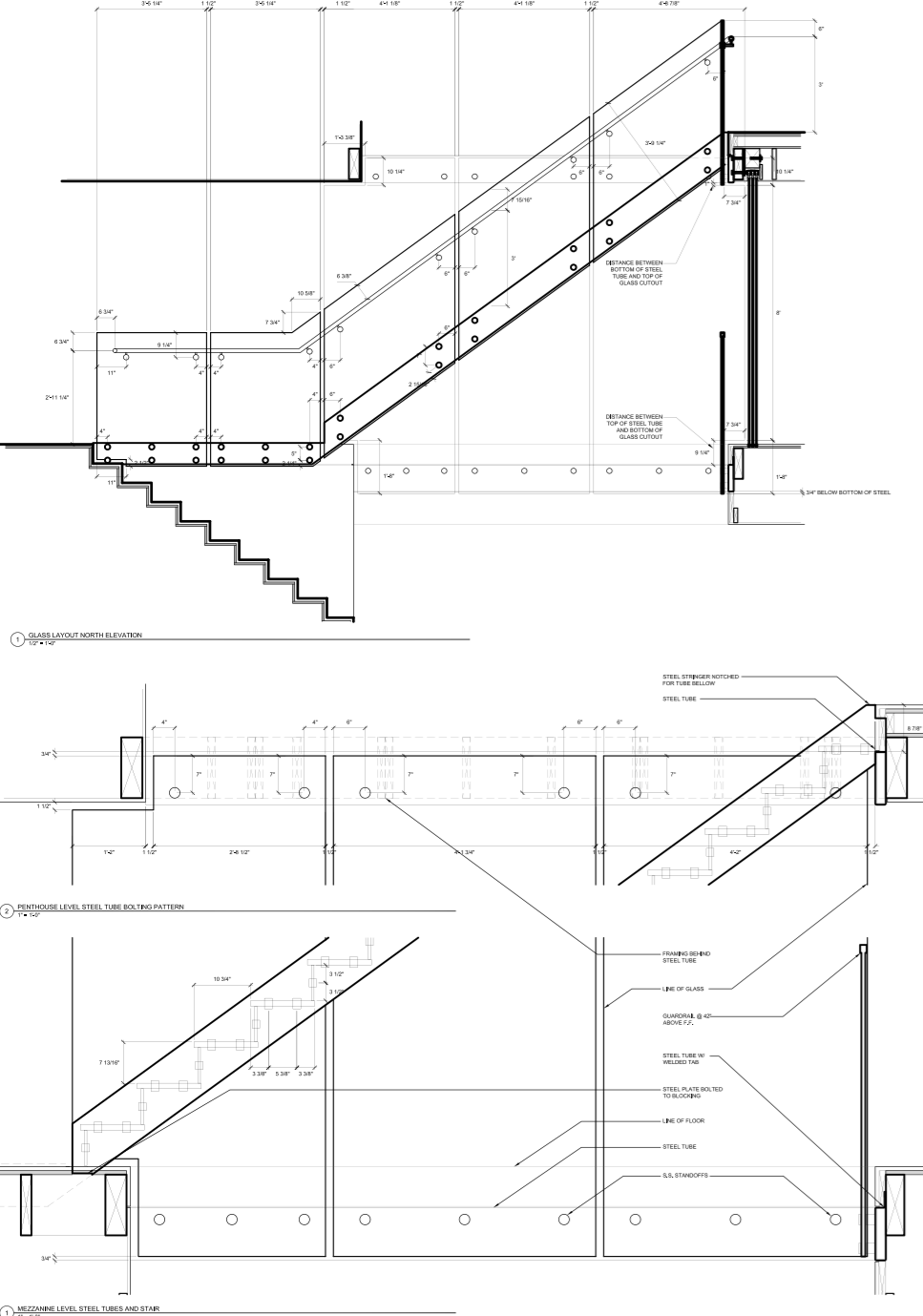


The Stewart Residence gave me the experience to take a project from concept sketches and renderings, through construction documents and permitting, into construction and finally to a satisfied client. The work, for Los Angeles Design/Build firm Richard Seltzer Designs, allowed me to see how architecture and construction must work together to create successful space.



For example, the above drawings were the result of a close collaboration with the steel contractor, the glass engineer, the glass fabricator, and the client. That collaboration allowed for a beautifully finished space, as well as a painless construction schedule.

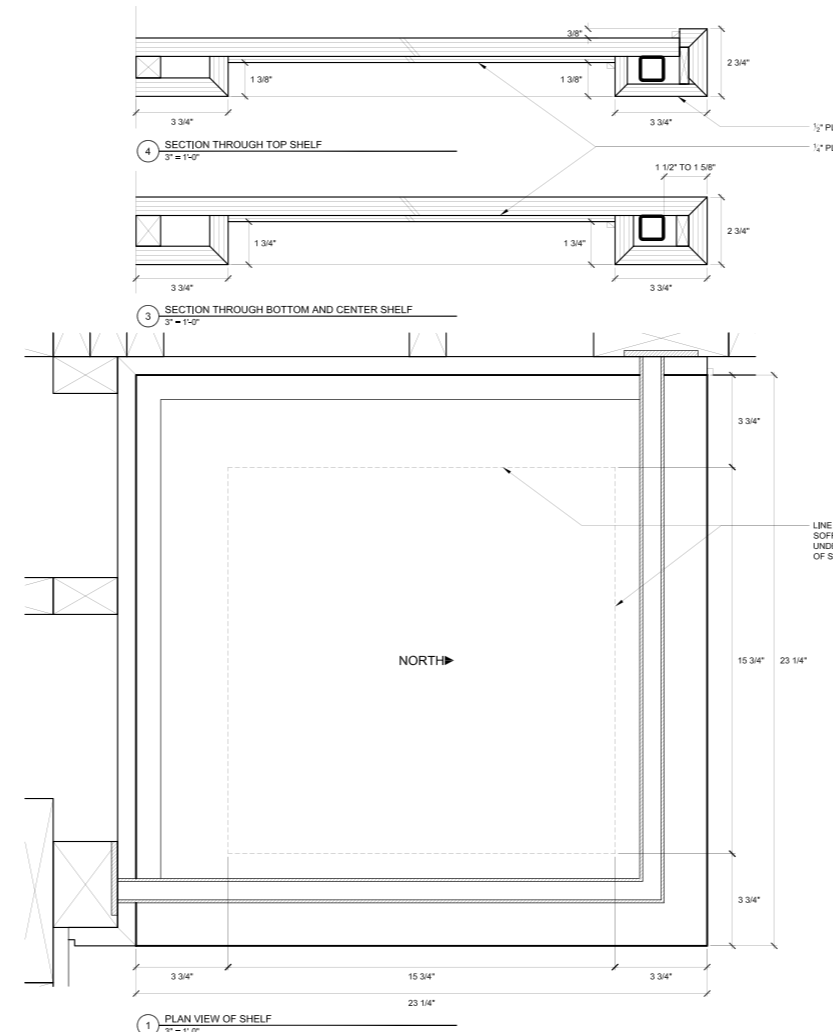
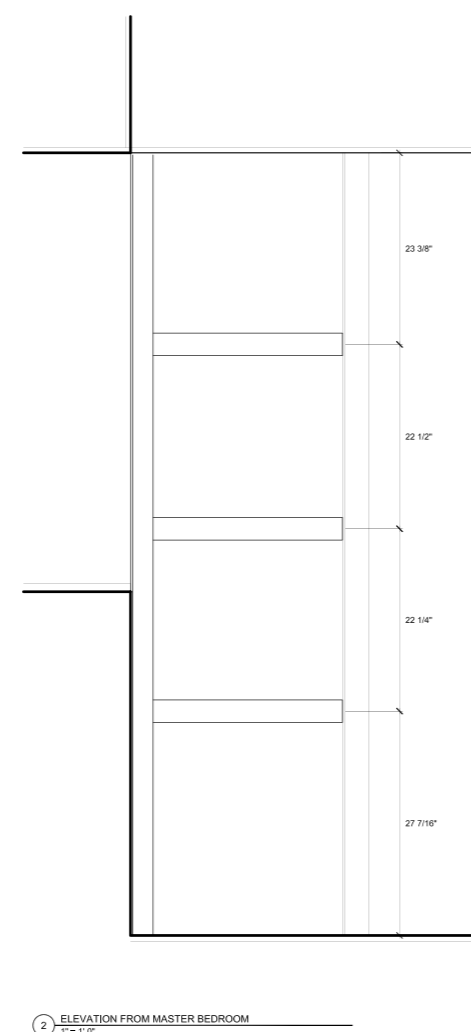
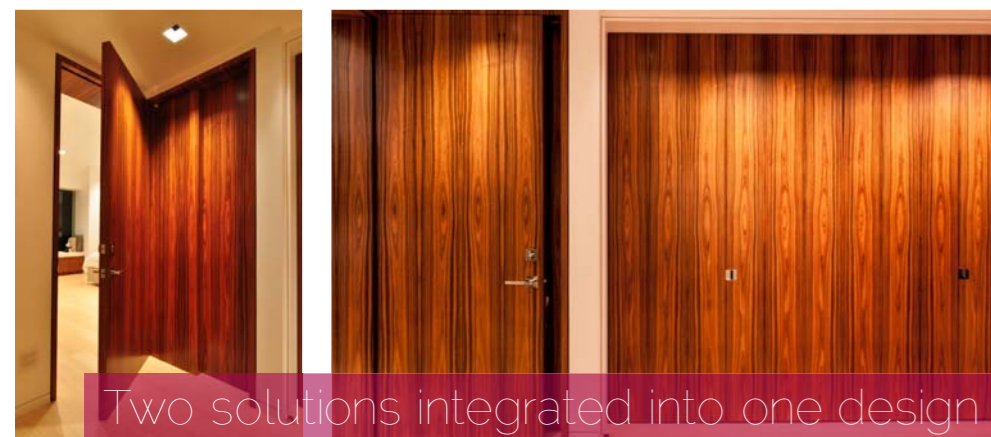
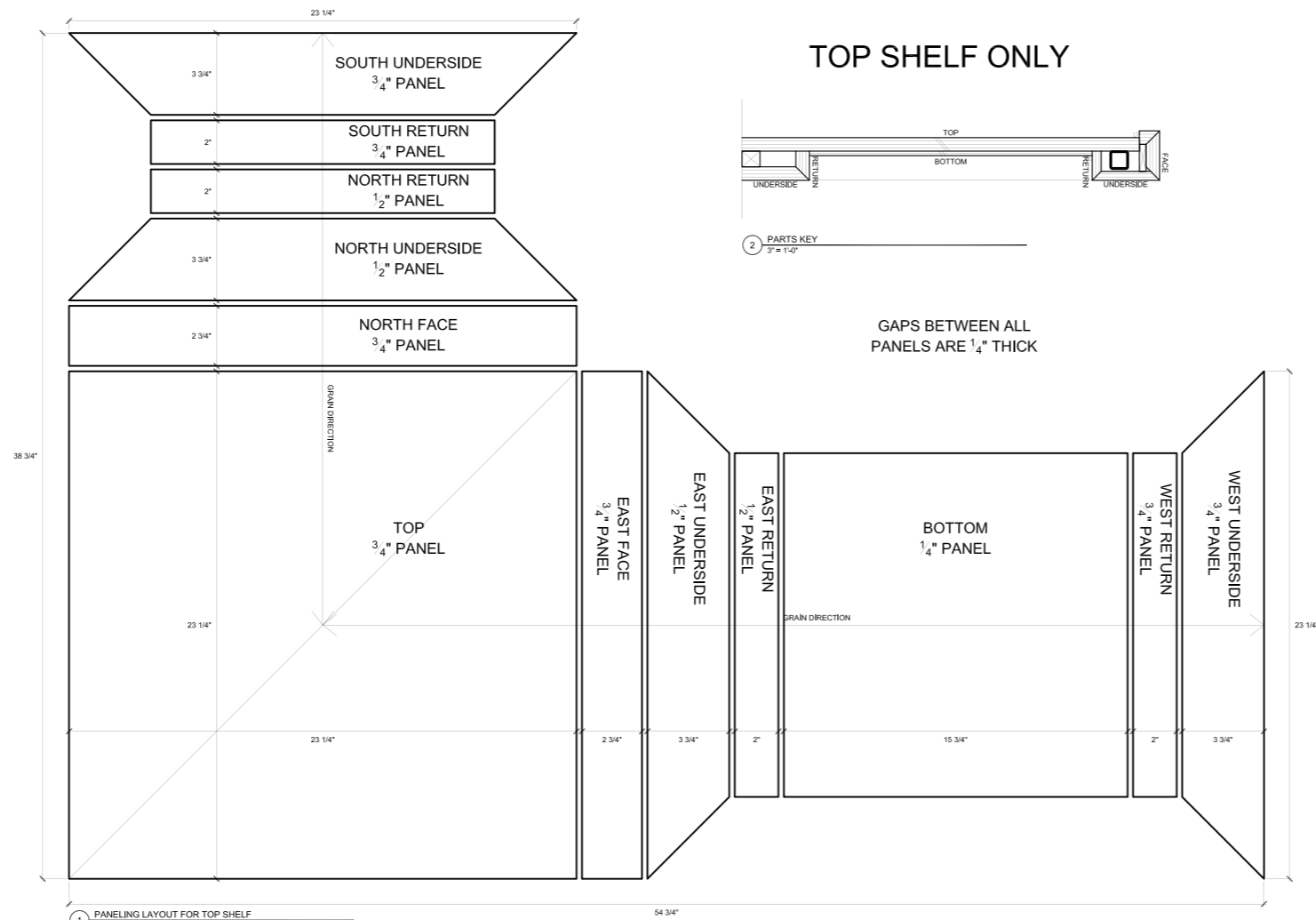
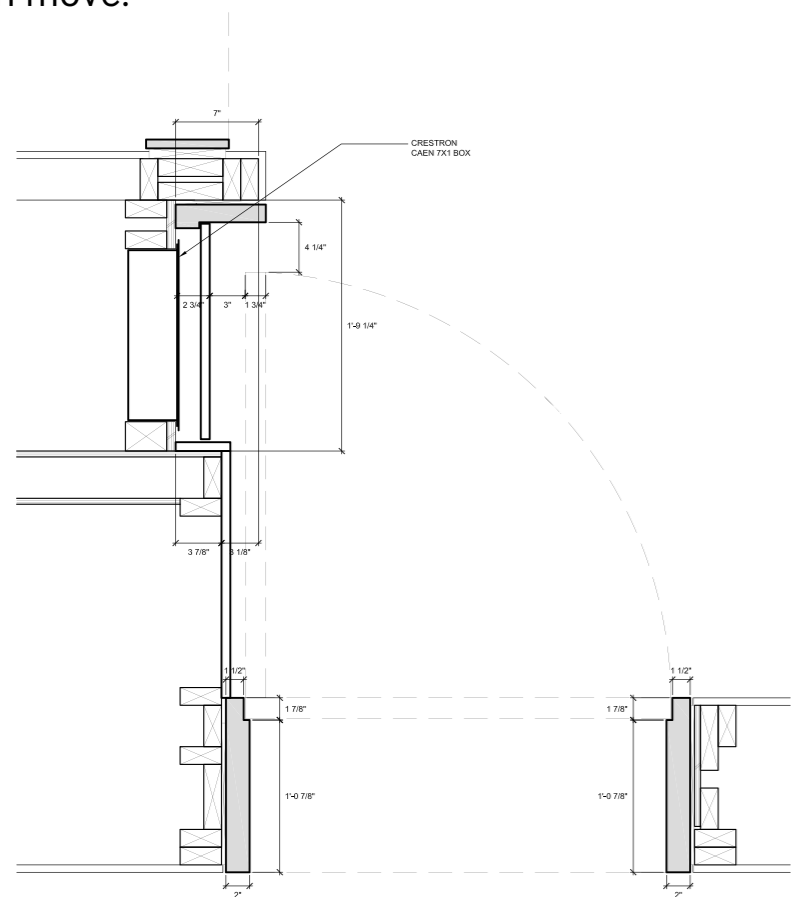


The new glass core creates an open focal point for each space

Designing with the principal partner using sketching and rendering as well as preparing and presenting renderings, drawings, and schedules directly to clients allowed for very close attention to detail.

Precise drawings for veneer layups and millwork construction created a modern and thoughtful feel in each detail. These details enhance the materials and tectonic forms that they are part of. They allow for specific control of the client's environment, and a method for engaging the design beyond a basic concept.

For example, the drawing below solves for two problems, a Crestron panel and a door pocket, in one clean move.



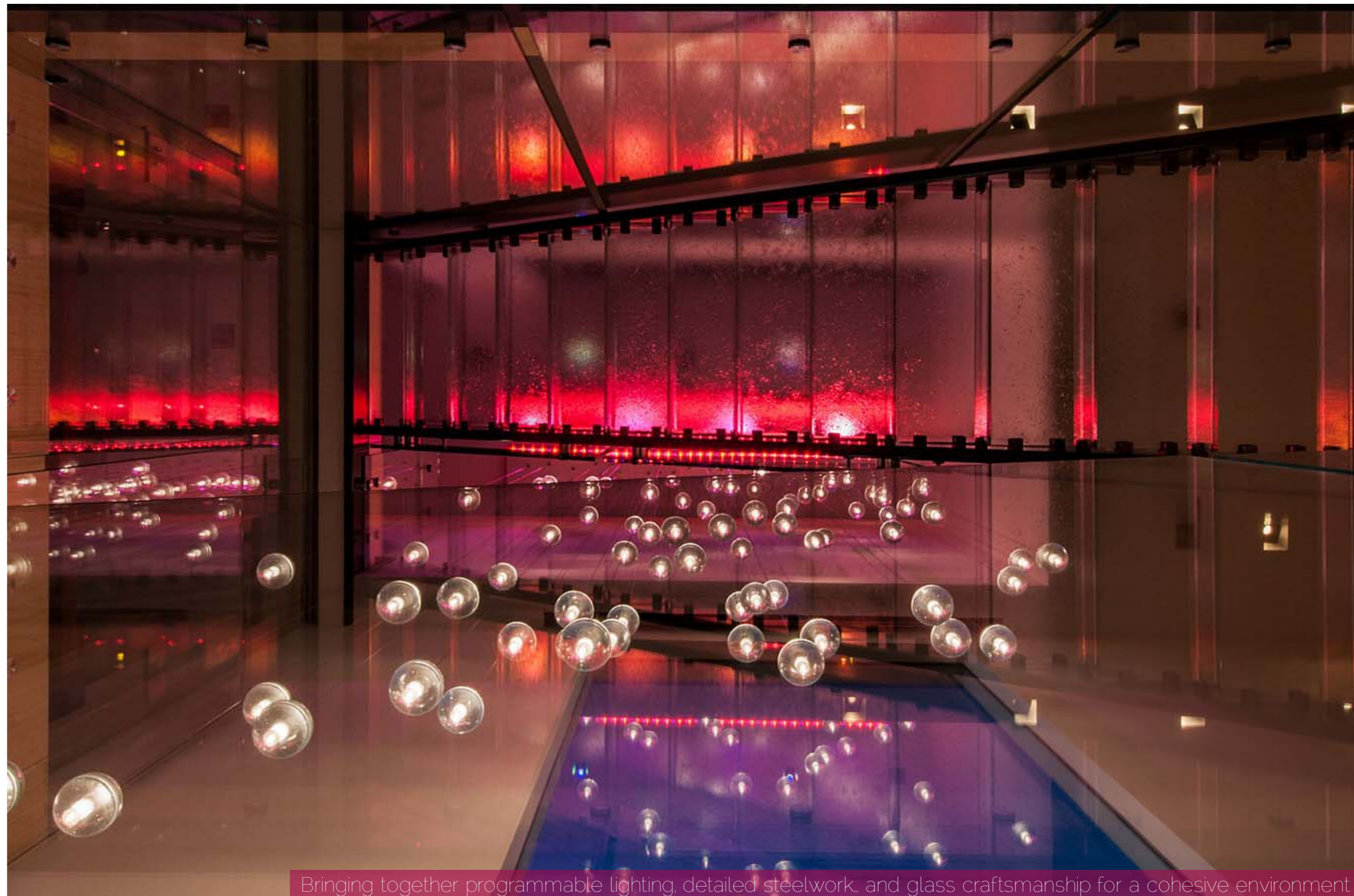
My duties surveyed the entire architectural process, with a specific focus on:

- Designing an initial concept through sketching & rendering
- Preparing and presenting renderings, drawings, and schedules directly to clients
- Organizing and creating construction documents and schedules per trade as well as specifying, ordering, and scheduling equipment during construction
- Working directly with sub-contractors during construction
- Solving with post completion client and design issues

From these duties I gained a detail driven focus and commitment to perfect craftsmanship that fostered an appreciation of just how much work and love goes into a successful design.

I now bring this attitude of hard work and commitment to everything I work on.

For more information about this project, please visit:
www.argworx.com/?name=Stewart%20Residence



Concept, construction, & completion

Bringing together programmable lighting, detailed steelwork, and glass craftsmanship for a cohesive environment

Creating an interface between the Los Angeles chapters of the American Institute of Architects (AIA|LA) and the American Planning Association (APA-LA) to effect change and build public awareness of the possibilities surrounding new rail construction in LA, the Call for Ideas committee of RailLA had two main purposes:

- 1) Locate and design a space to facilitate an LA-centric conversation around rail.
- 2) Promote, organize, and curate a call for rail-based projects from all around the world.

Working closely with AECOM and Perkins+Will the committee found a prominent space in the heart of Downtown LA that allowed for a conversation space, as well as an impromptu auditorium for future presentations.

The center of the conversation would be based around the ideas that were collected from around the world. These were showcased on two digital billboards wrapped around a giant, 2-story, 100-foot-long, free-standing scaffold surrounded by physical submissions.

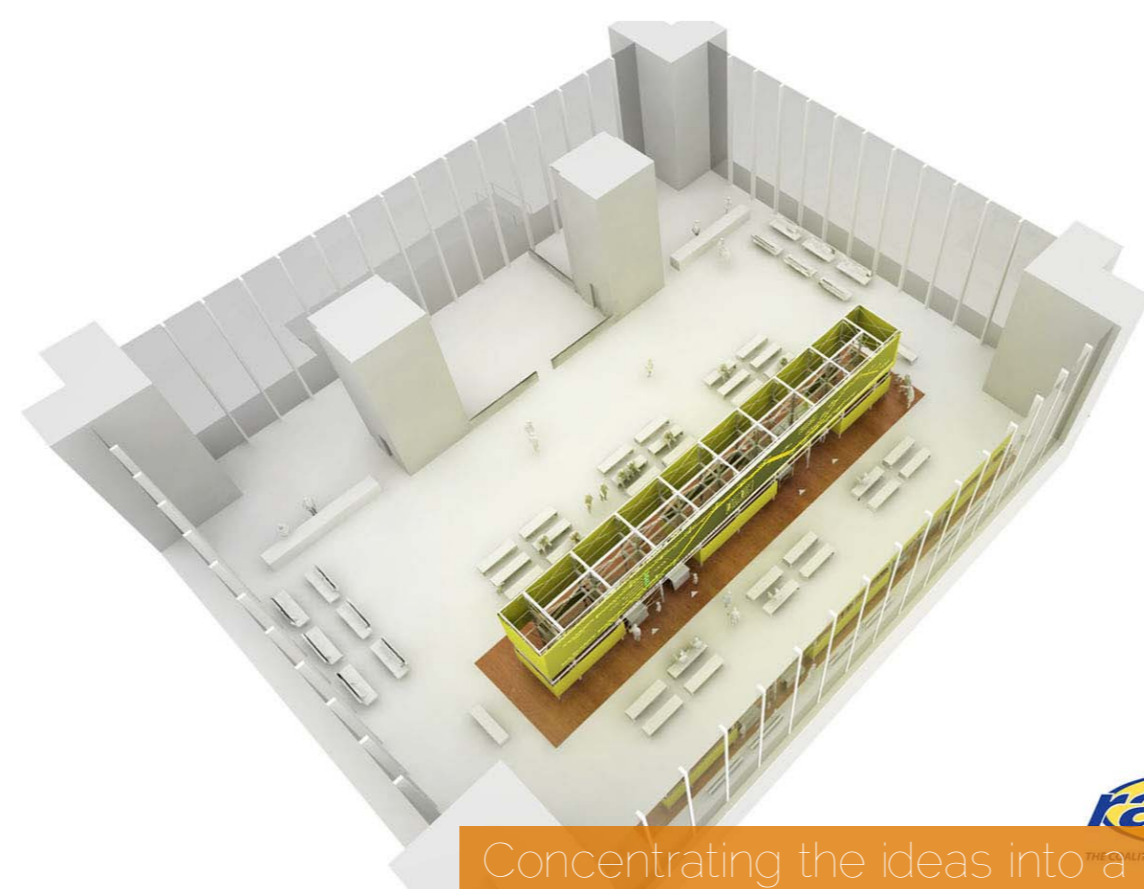
Due to the small size of the committee and the low budget, my role ranged from designing the space, finding equipment donors, budgeting expenses, to organizing and helping build the 2-story, 100-foot long scaffolding installation, designing and installing the lighting and electrical, and even setting up the massive projectors with the right software.



Creating intimate spaces in the scaffolding



The conversation, as planned



Concentrating the ideas into a focal point



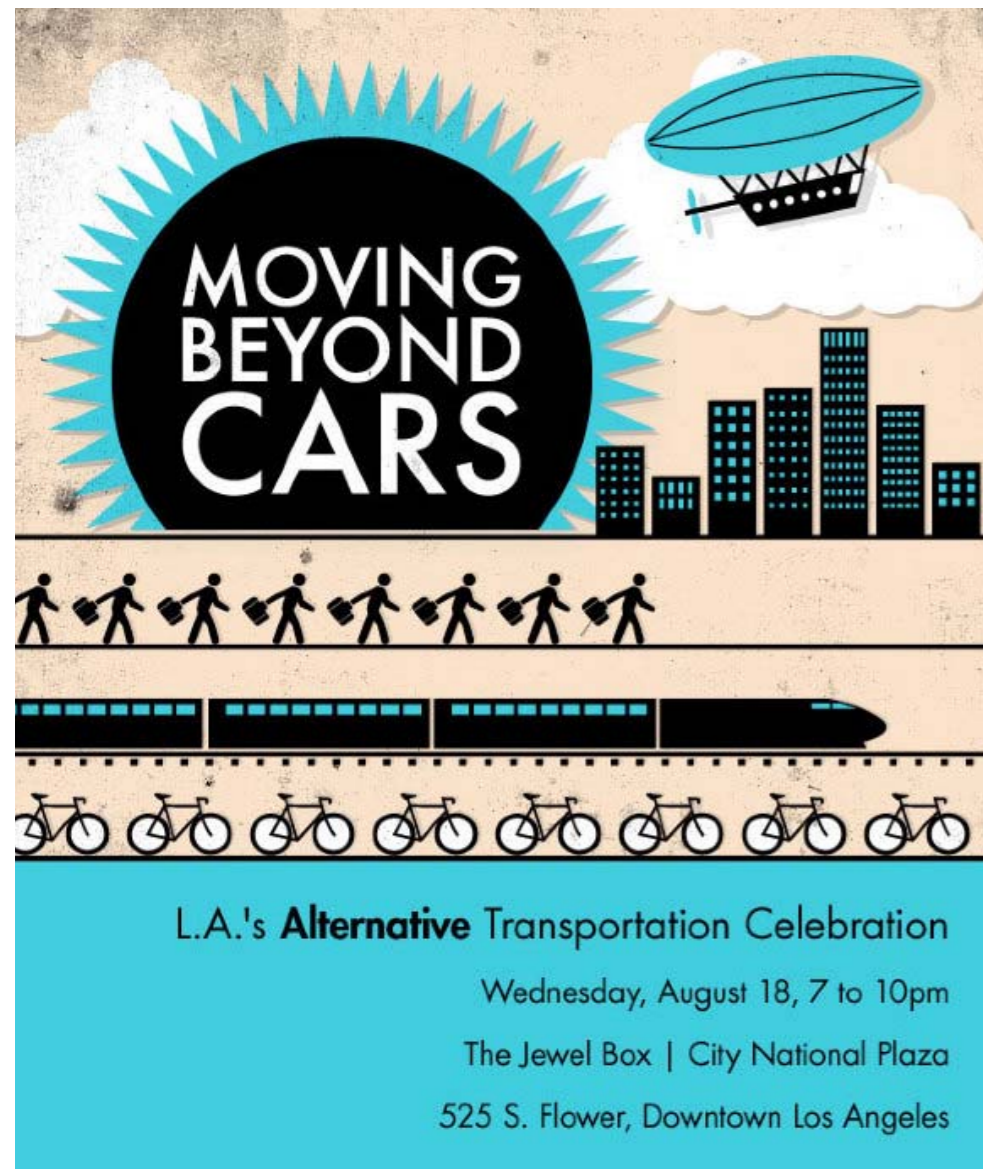
Visual stimulus for the conversation



Curating, promoting, and organizing “LA Beyond Cars,” a multimedia experience showcasing concepts, ideas, and musings from around the world on the future of rail in LA involved going through hundreds of submissions from the general public as well as AECOM, Morphosis, MVRDV, Eric Owen Moss Architects, and many more. The exhibit also hosted other events, like the GOOD magazine celebration.

This project gave me an understanding that the design of the space, the methods of display, and ultimately the people that carried out the conversation made the exhibit successful.

For more information about this project, please visit:
www.argworx.com/?name=LA%20Beyond%20Cars



A massive collection of ideas and projects all organized under one idea

PROJECT - The San Lorenzo Residence at the Pacific Palisades

Artur Grochowski - 6

ROLE - Design Intern for Mike Jacobs Architecture

Siting & Programming

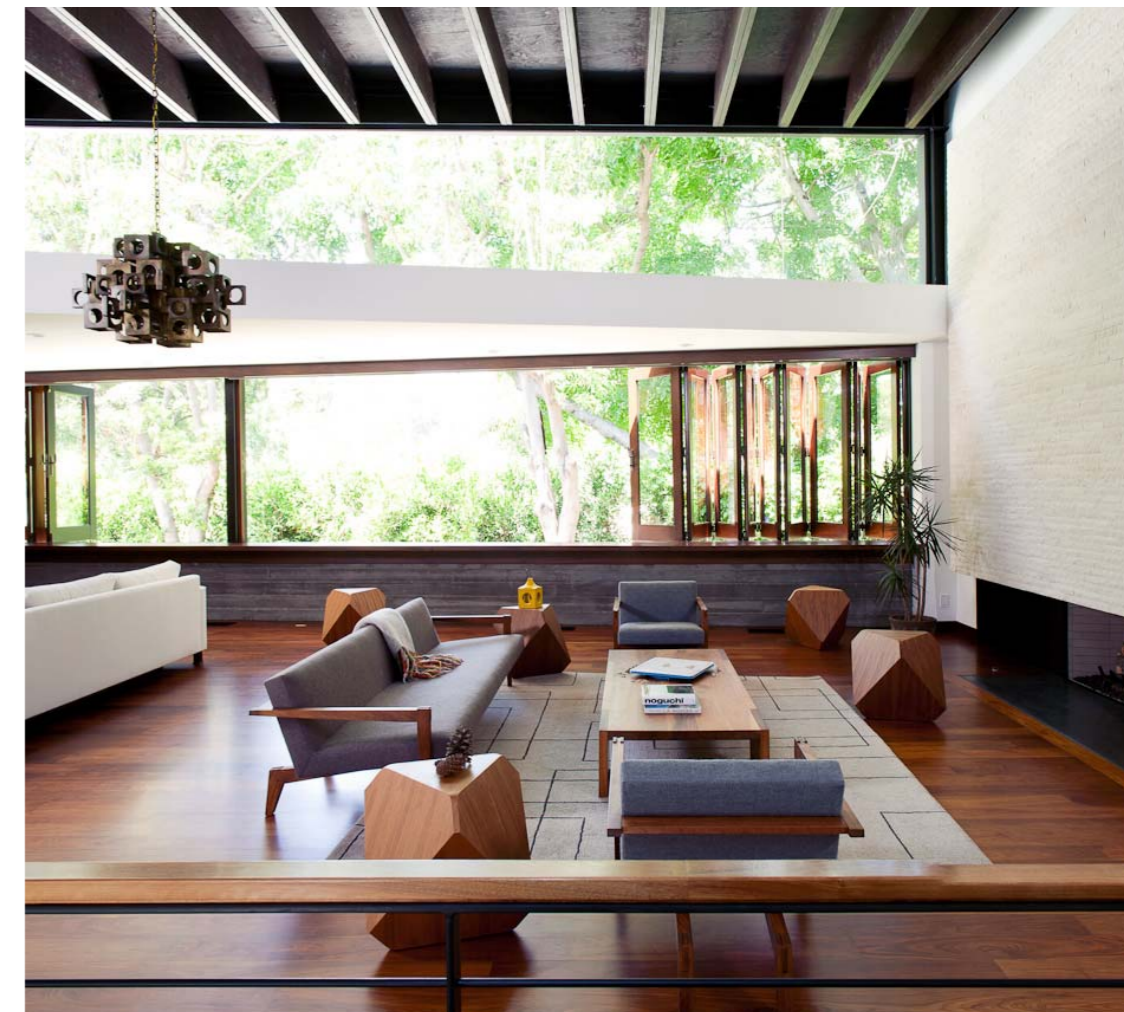
Winner of the 2011 Design Honor Award, Los Angeles Chapter American Institute of Architects and published in the Fall 2013 edition of California Home & Design, the San Lorenzo project solidified my understanding of bring a project from one dimensional concept to multi-layered design.

Located at the end of a canyon road, the San Lorenzo House responds to and engages its surrounding landscapes: an interior private garden to the south and the manicured fairways of a golf course to the north.

Following a careful zoning study, two interlocking "L-shaped" gestures emerged to formally and programmatically organize the house: an open and transparent enclosure, a veranda, (steel/glass) that incorporates the communal living spaces of garden, pool, living rooms and theater; and an opaque enclosure (stucco/cedar) that holds the basic form of the house and incorporates the private bedrooms and service spaces.



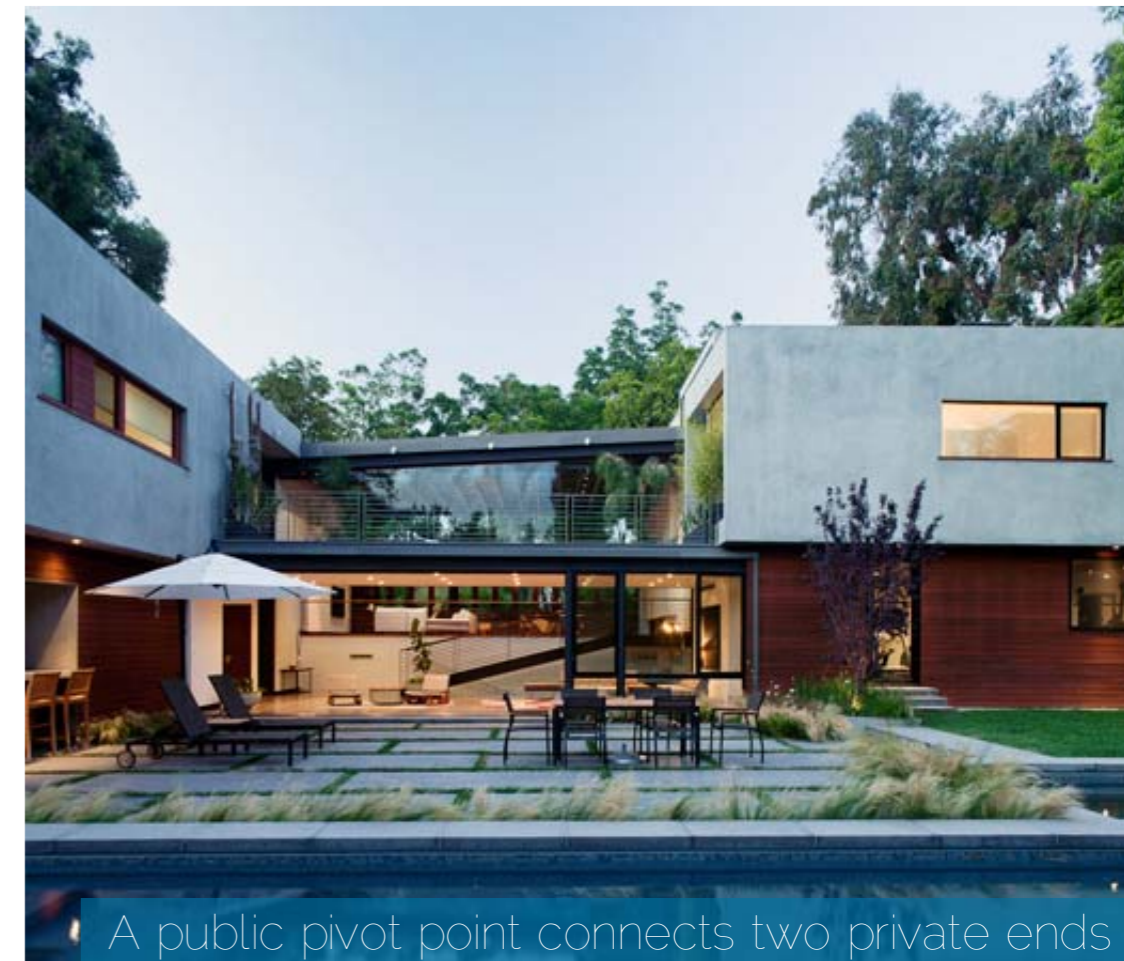
Yard and house make an integrated unit



Connection to the fairway thru upper living room



Communal space connects to the site



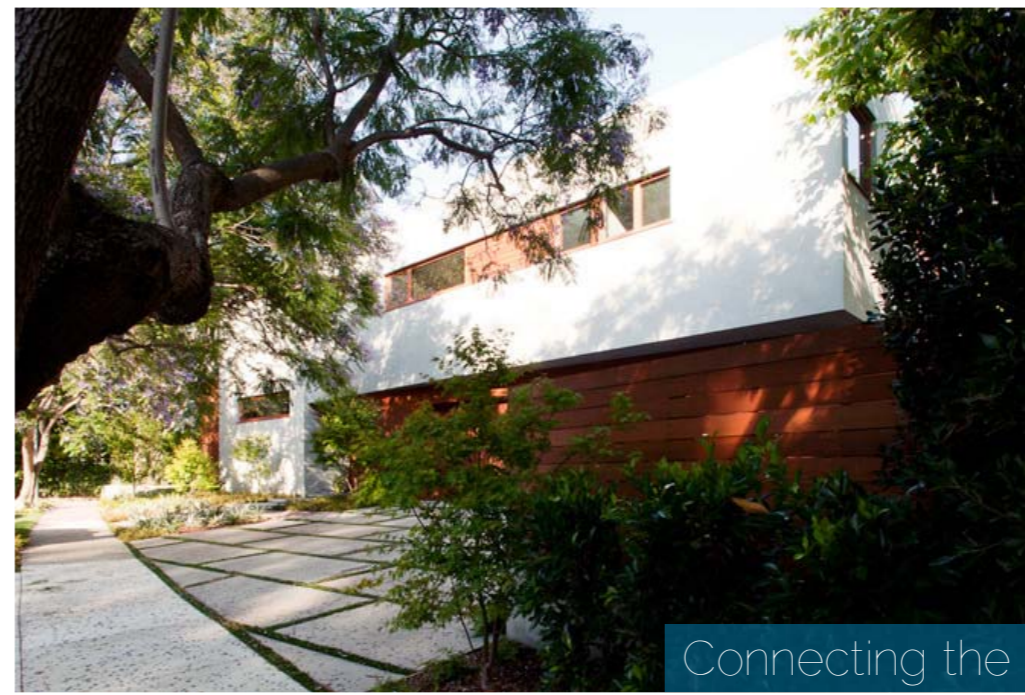
A public pivot point connects two private ends

The large open living space is central to the organization and performance of the house; the space of exchange. Pocket sliding doors, opening the south wall to the garden, and north facing windows, unfolding to view the fairways, create direct connections to the exterior. These large openings passively cool the house and draw fresh air deep into the residual spaces to naturally ventilate the home.

Social exchange is expressed in section. An elongated formal stair links the terraced living spaces to the exterior and connects to the theater below.

A pair of secondary flanking stairs provide access from the residual private rooms and service areas. These multiple points-of-entry produce a constant interchange between the family unit.

For more information about this project, please visit:
www.argworx.com/?name=San%20Lorenzo



Connecting the building to the site at all opportunities



Iterative design methods developing the initial concept

